

Shielding Element

Absorbed Light

The **Extradark** system associates an optical TIR PMMA lens to an element that geometrically shields the light beam viewing angle to obtain highly uniform lighting and full beam control. The polished black light shield is used to control the mirror reflection of the light, perfectly controlling the unified glare rating ($UGR^* < 19$).

** UGR stands for Unified Glare Rating.*

The rating is subject to national and European standards that set the permitted limits in working environments.



Nulla is an extreme expression of subtraction, uniting optics and electronics as an answer to the ultimate challenge: the absence of structural support, the essence of light. In 2010, Nulla was the first to grasp the mono-dimensionality of LEDs.

Nulla is a project that represents both the beginning and the end of my work on light.

It's the beginning, in the sense that I have always been looking for absolute light, it's the end because it represents the total synthesis of my work. It is the most generous of my lamps. Its sole objective is to hide and give all the attention to whatever it is lighting.

ADI Compasso d'Oro Award, 2014





Compasso d'Oro ADI
Award 2014

DESIGN DAVIDE GROPPI - 2010
RECESSED CEILING LAMP - METAL

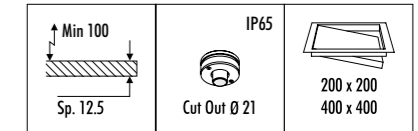
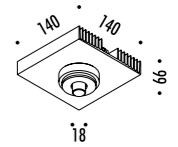
NULLA



EXTRADARK LUMINAIRE

IP20/IP65

The sizes are expressed in millimeters.



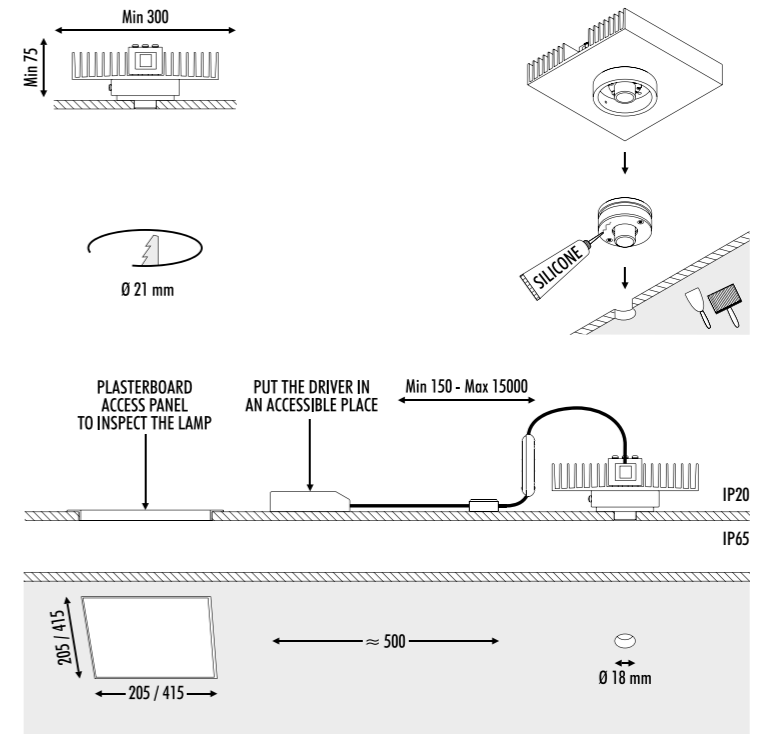
1A4100008.27.20	STANDARD - 2700K - BEAM 23°	24 V DC - 14 W LED - UGR < 19 2700K - 425 lm - CRI > 90 / 3000K - 458 lm - CRI > 90 - BEAM 23° VISIBLE HOLE Ø 18 mm COMPULSORY INSTALLATION KIT NOT INCLUDED DRIVER NOT INCLUDED
1A4100008.30.20	STANDARD - 3000K - BEAM 23°	
1A2110008.27.20	STANDARD - 2700K - BEAM 32°	24 V DC - 14 W LED - UGR < 19 2700K - 538 lm - CRI > 90 / 3000K - 579 lm - CRI > 90 - BEAM 32° VISIBLE HOLE Ø 18 mm COMPULSORY INSTALLATION KIT NOT INCLUDED DRIVER NOT INCLUDED
1A2110008.30.20	STANDARD - 3000K - BEAM 32°	

COMPULSORY INSTALLATION KITS

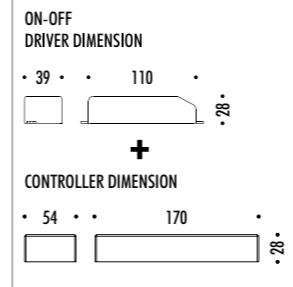
1A2200400.00.00	MATT BLACK - IP65	PLASTERBOARD FLANGE 12,5 mm PLASTERBOARD CUT-OUT Ø 21 mm - MINIMUM SPACE FOR MOUNTING 100 mm

OPTIONAL INSTALLATION KITS

1A3780000.00.00	STANDARD 200 x 200 mm	PLASTERBOARD PANEL 12,5 mm PLASTERBOARD CUT-OUT 200 x 200 mm / 400 x 400 mm
1A3790000.00.00	STANDARD 400 x 400 mm	



DIM (DALI - PUSH - 0/1-10 V - TRIAC)



INSTALLATION KITS FOR TRIAC DIMMING: DRIVER 1Z0240410 + CONTROLLER 1Z0000034

1Z0240410	STANDARD	DRIVER INPUT (110-127 V) 220-240 V - 50/60 Hz - OUTPUT 24 V DC - (12 W) 22 W - IP20 NOT DIMMABLE
1Z0000034	STANDARD	CONTROLLER DALI - PUSH - 1-10 V - TRIAC - IP20



Compasso d'Oro ADI
Award 2014

DESIGN DAVIDE GROPPI - 2010
RECESSED CEILING LAMP - METAL

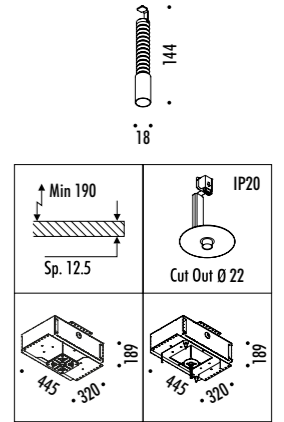
NULLA 18



EXTRADARK LUMINAIRE

IP20

The sizes are expressed in millimeters.



1A2010008.27.20	STANDARD - 2700K - BEAM 20°	24 V DC - 4,5 W LED - UGR<19 2700K - 174 lm - CRI>90 / 3000K - 186 lm - CRI>90 - BEAM 20° VISIBLE HOLE Ø 18 mm - LUMINAIRE REMOVABLE FOR MAINTENANCE COMPULSORY INSTALLATION KIT NOT INCLUDED DRIVER NOT INCLUDED
1A2010008.30.20	STANDARD - 3000K - BEAM 20°	

COMPULSORY INSTALLATION KITS

1A2210400.00.00	MATT BLACK	PLASTERBOARD FLANGE 12,5 mm PLASTERBOARD CUT-OUT Ø 22 mm - MINIMUM SPACE FOR MOUNTING 190 mm
-----------------	------------	---

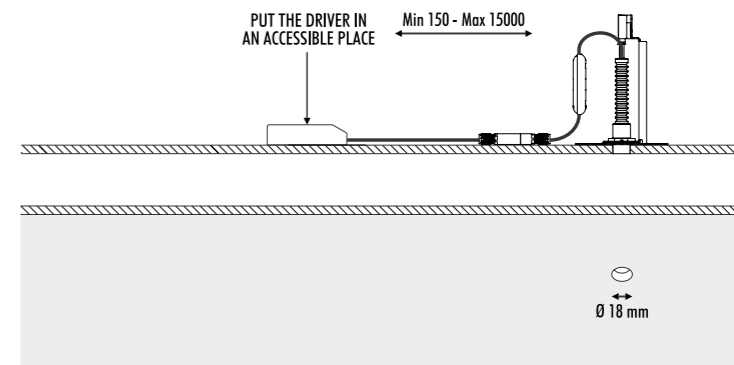
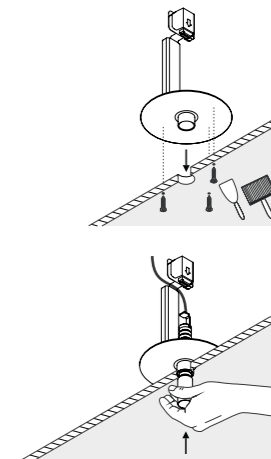
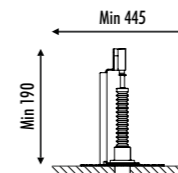
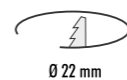
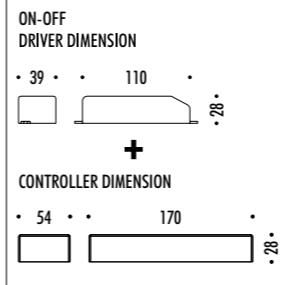
OPTIONAL INSTALLATION KITS

1A2390000.00.00	STANDARD	PLASTER BOX DIMENSIONS 189 x 445 mm
1A2240000.00.00	STANDARD	CONCRETE BOX DIMENSIONS 189 x 445 mm





DIM (DALI - PUSH - 0/1-10 V - TRIAC)



INSTALLATION KITS FOR TRIAC DIMMING: DRIVER 1Z0240410 + CONTROLLER 1Z0000034

1Z0240410	STANDARD	DRIVER INPUT (110-127 V) 220-240 V - 50/60 Hz - OUTPUT 24 V DC - (12 W) 22 W - IP20 NOT DIMMABLE
1Z0000034	STANDARD	CONTROLLER DALI - PUSH - 1-10 V - TRIAC - IP20

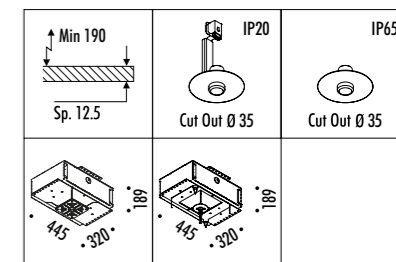
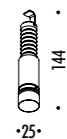
The sizes are expressed in millimeters.

DESIGN DAVIDE GROPPI - 2010
RECESSED CEILING LAMP - METAL

NULLA 25

EXTRADARK LUMINAIRE

IP20



1A4080008.27.20	STANDARD - 2700K - BEAM 23°	24 V DC - 9 W LED - UGR < 19 2700K - 304 lm - CRI > 90 / 3000K - 327 lm - CRI > 90 - BEAM 23° VISIBLE HOLE Ø 25 mm - LUMINAIRE REMOVABLE FOR MAINTENANCE COMPULSORY INSTALLATION KIT NOT INCLUDED DRIVER NOT INCLUDED
1A4080008.30.20	STANDARD - 3000K - BEAM 23°	
1A2020008.27.20	STANDARD - 2700K - BEAM 32°	24 V DC - 9 W LED - UGR < 19 2700K - 384 lm - CRI > 90 / 3000K - 413 lm - CRI > 90 - BEAM 32° VISIBLE HOLE Ø 25 mm - LUMINAIRE REMOVABLE FOR MAINTENANCE COMPULSORY INSTALLATION KIT NOT INCLUDED DRIVER NOT INCLUDED
1A2020008.30.20	STANDARD - 3000K - BEAM 32°	

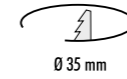
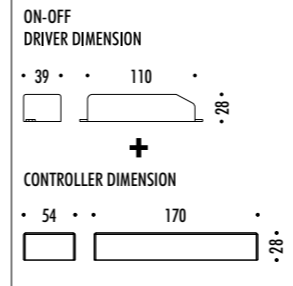
COMPULSORY INSTALLATION KITS

1A2170400.00.00	MATT BLACK	PLASTERBOARD FLANGE 12,5 mm PLASTERBOARD CUT-OUT Ø 35 mm - MINIMUM SPACE FOR MOUNTING 190 mm
1A3980400.00.00	MATT BLACK - IP65	PLASTERBOARD FLANGE 12,5 mm PLASTERBOARD CUT-OUT Ø 35 mm - MINIMUM SPACE FOR MOUNTING 190 mm

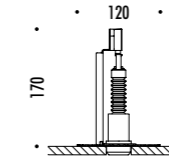




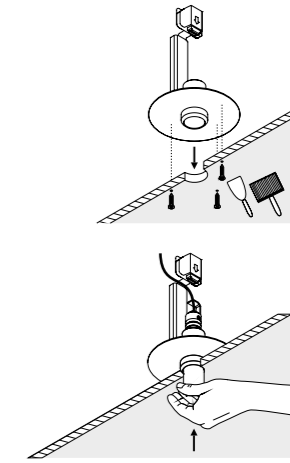
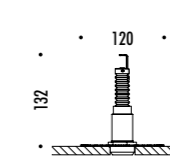
DIM (DALI - PUSH - 0/1-10 V - TRIAC)



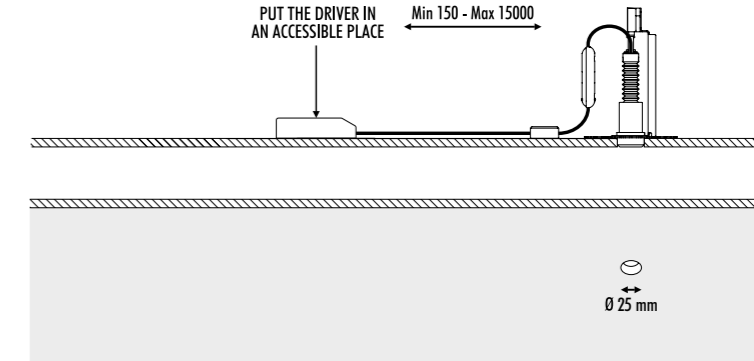
PLASTERBOARD FLANGE IP20



PLASTERBOARD FLANGE IP65



PUT THE DRIVER IN AN ACCESSIBLE PLACE ← Min 150 - Max 15000



OPTIONAL INSTALLATION KITS

1A2380000.00.00	STANDARD	PLASTER BOX DIMENSIONS 189 x 445 mm
1A2230000.00.00	STANDARD	CONCRETE BOX DIMENSIONS 189 x 445 mm

INSTALLATION KITS FOR TRIAC DIMMING: DRIVER 1Z0240410 + CONTROLLER 1Z0000034

1Z0240410	STANDARD	DRIVER INPUT (110-127 V) 220-240 V - 50/60 Hz - OUTPUT 24 V DC - (12 W) 22 W - IP20 NOT DIMMABLE
1Z0000034	STANDARD	CONTROLLER DALI - PUSH - 1-10 V - TRIAC - IP20